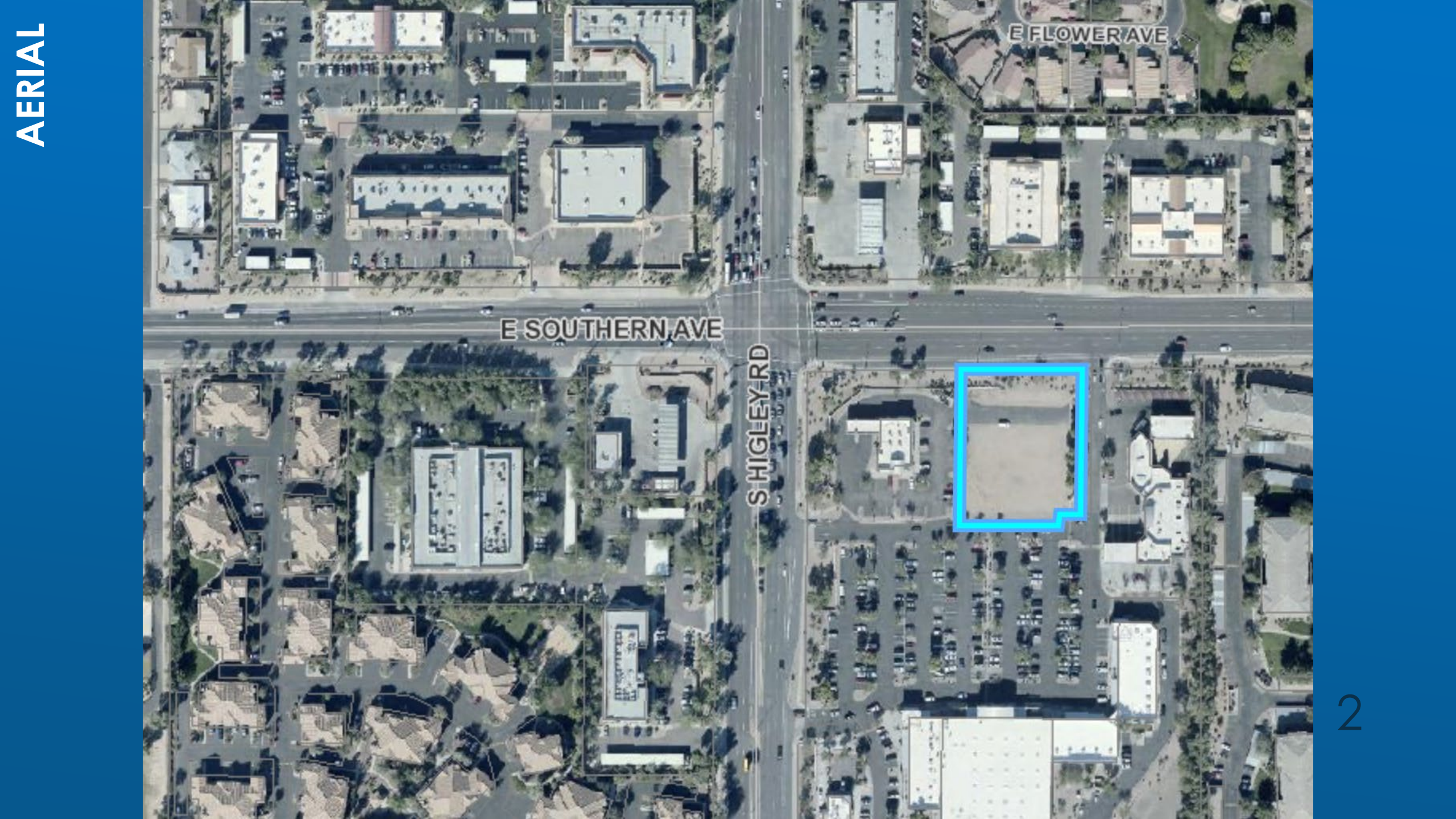


DESIGN REVIEW BOARD WORK SESSION

April 14, 2020

DRB20-00096



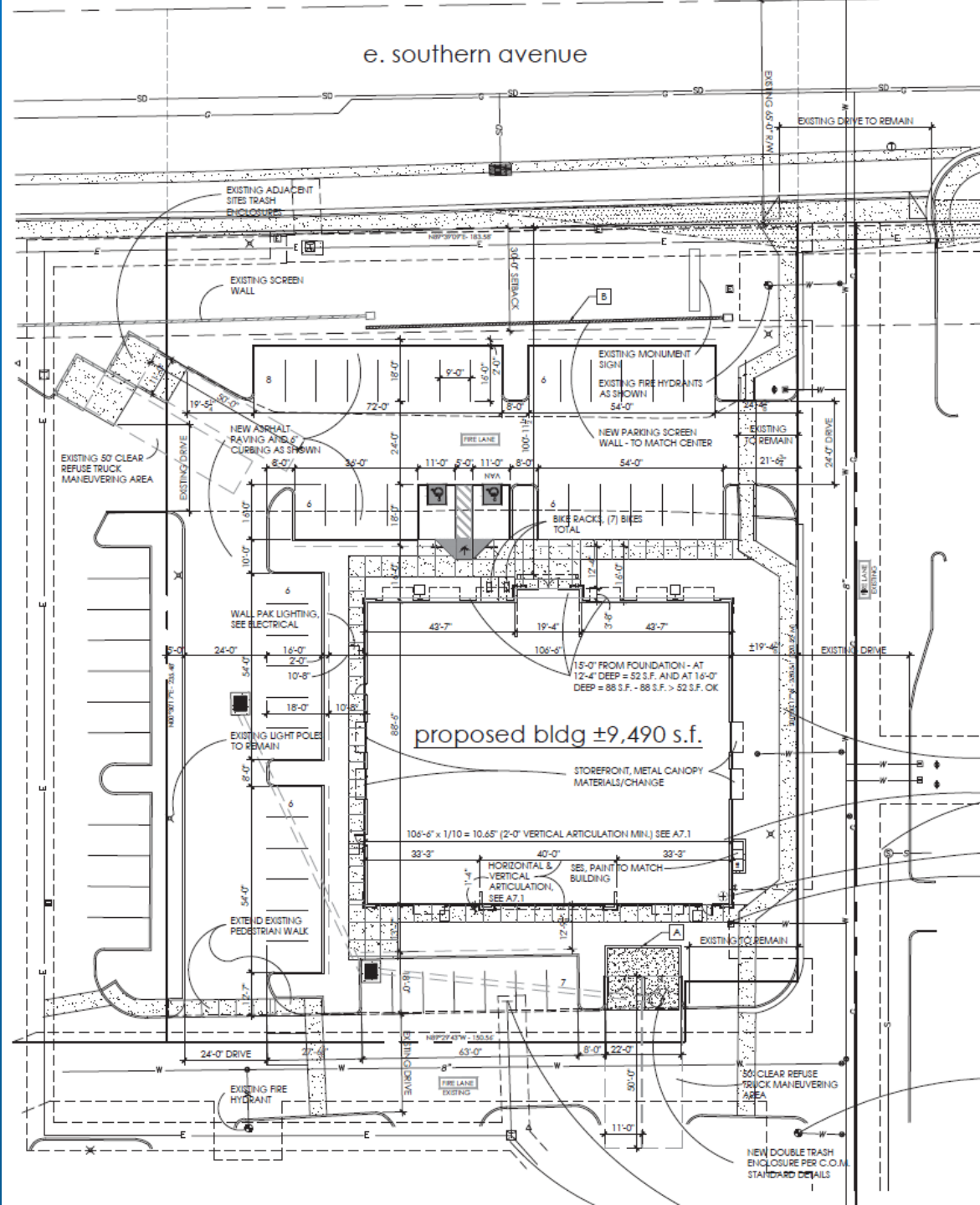
AERIAL

E SOUTHERN AVE

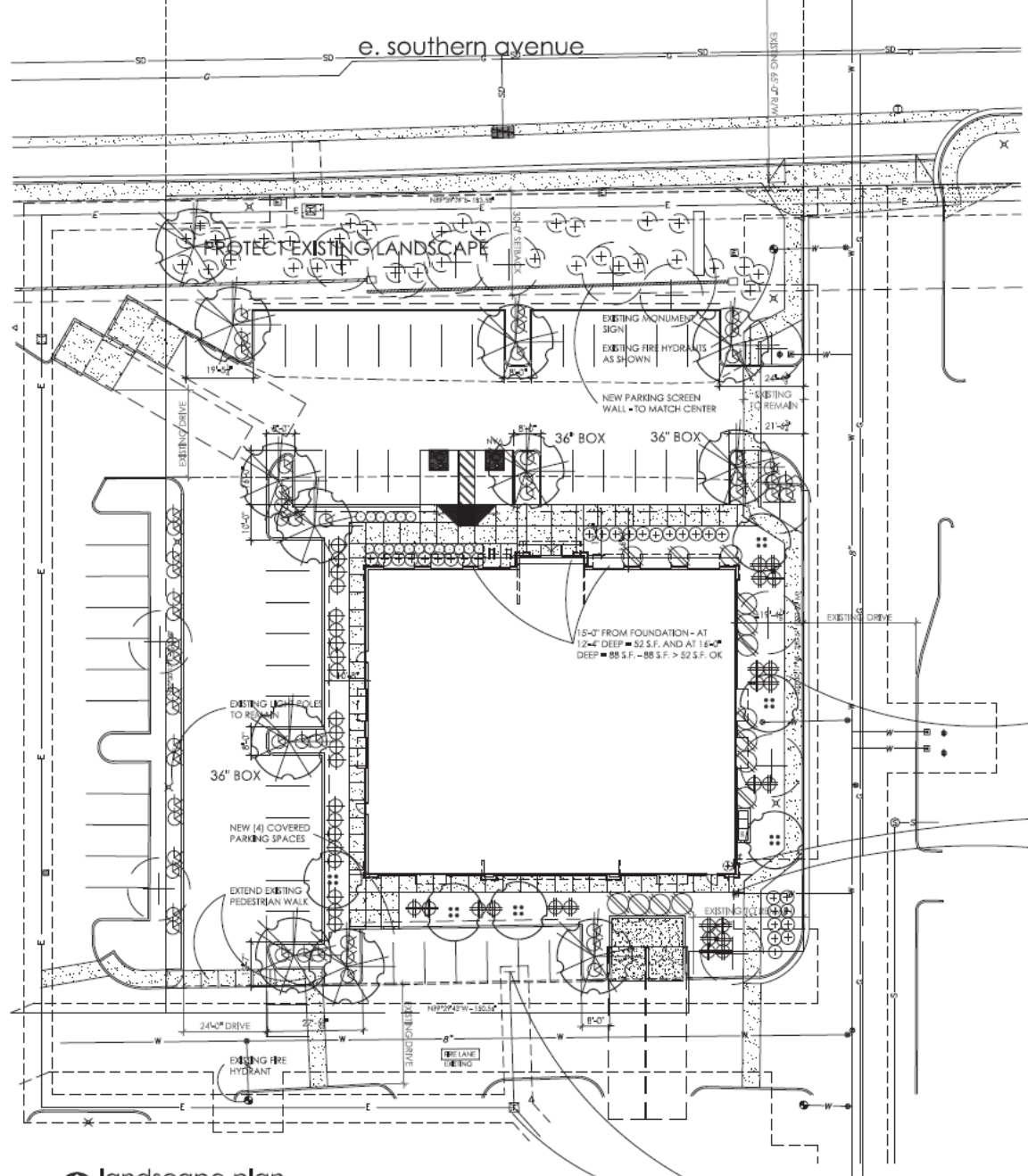
E FLOWER AVE

S HIGLEY RD





LANDSCAPE PLAN



LANDSCAPE LEGEND

-
-
-
-
-
-
-
-
-

LANDSCAPE DATA

- WEST PROPERTY LINE (235 FT)
- EAST PROPERTY LINE (221 FT)
- SOUTHERN AVE FRONTAGE (184 FT)
- SOUTH PROPERTY LINE (151 FT)
- PARKING STALLS (45)
- FOUNDATION BASE (400 FT)

MATCH ADJACENT EXISTING DECOMPOSED GRANITE 2\" DEPTH IN ALL LANDSCAPE AREAS

NOT A PART - LOT 3
ZONED: LC
APN# 141-03-085
EXISTING CARWASH

EXISTING HARDSCAPE/
PATHS TO REMAIN

FIRE RISER/FDC

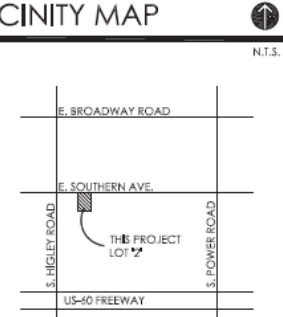
EXISTING WATER
METER STUB/BOX

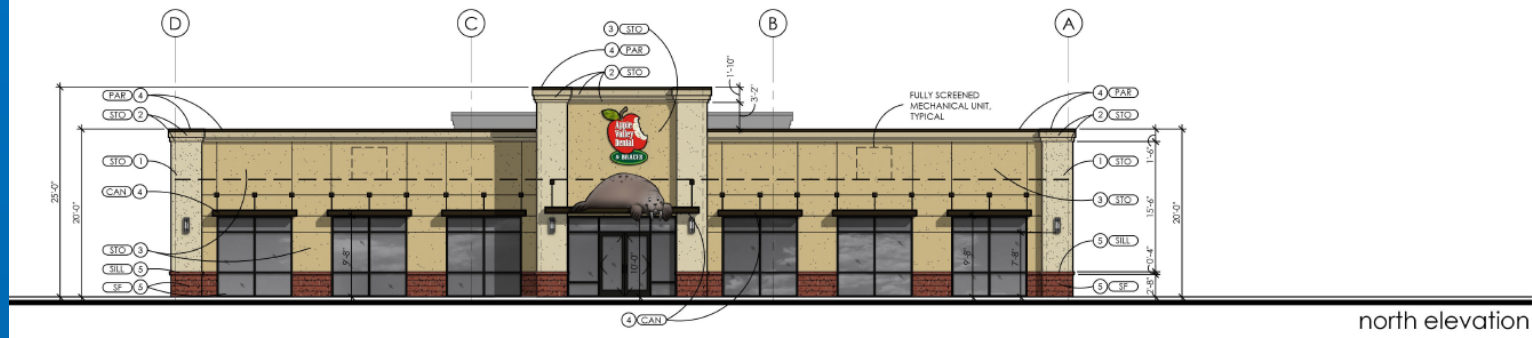
NOT A PART - LOT 4
ZONED: LC
APN# 141-03-086
EXISTING SPROUTS CENTER

EXISTING ELECTRIC/
POWER STUB FROM
EXISTING TRANSFORMER

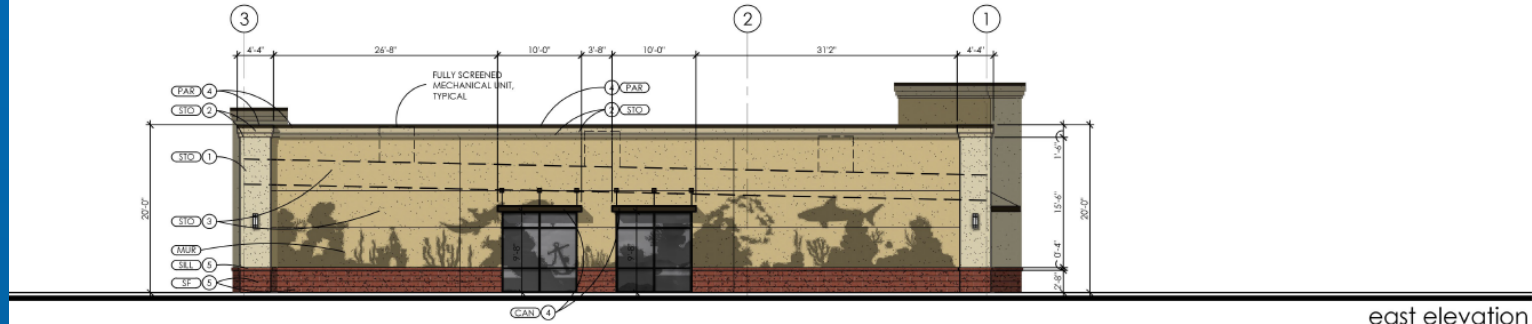
landscape plan
scale: 1\"=20\"-0\"

VICINITY MAP

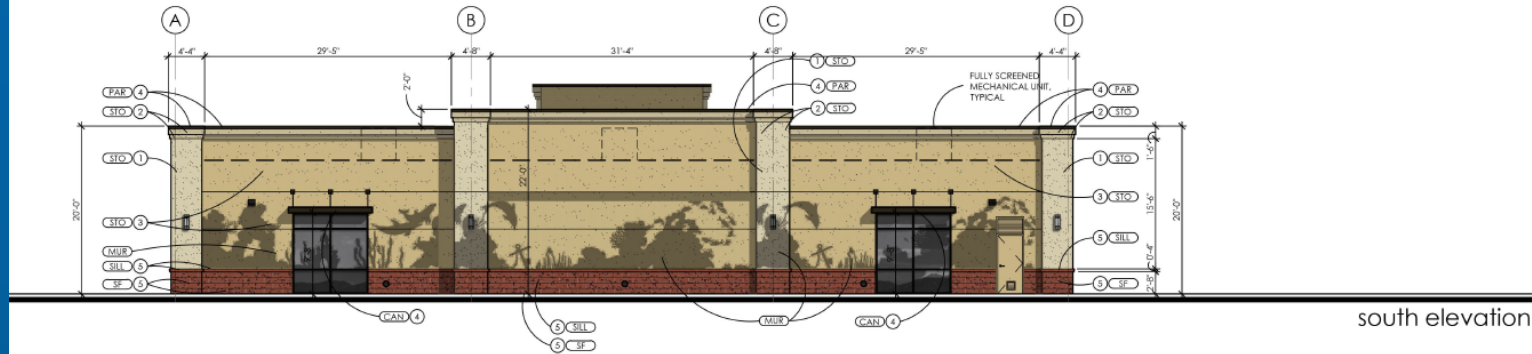




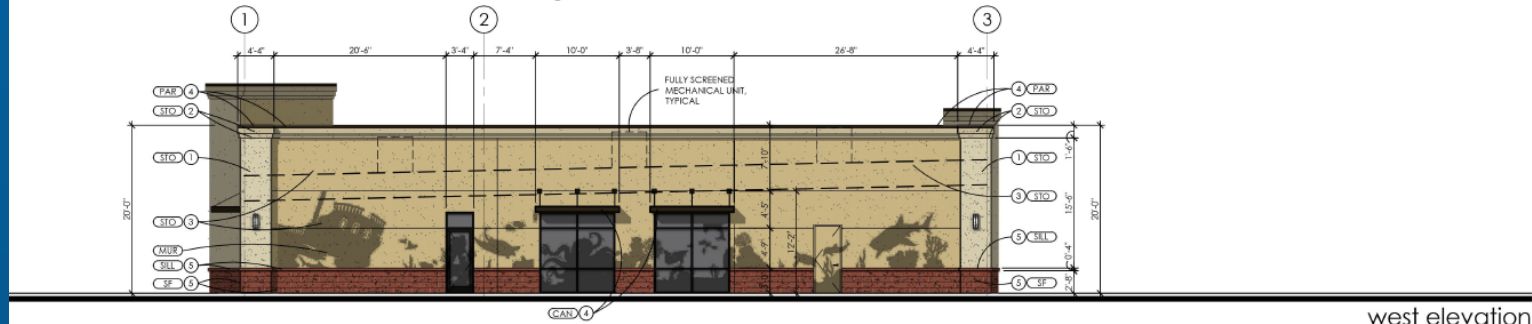
north elevation



east elevation



south elevation



west elevation



Building mass is broken up by wall and roof articulation



Building height shall be varied with at least 2 changes in roof height, varied over different portions of the building



Have an apparent bottom and top treatment

Alternative Compliance: Alternative compliance does not modify or reduce requirements of the Building Code or any other chapters or sections of the Zoning Code. Alternative compliance allows development to satisfy the Site Planning and Design Standards in this Chapter by providing comparable standards in a creative way.

Requirement:

- Have three different materials per each elevation
- Do not have a single material > 50% on any elevation

Alternative Compliance:

- The proposed alternative is aesthetically more complementary to the site, better fits into the context of the area, improves the overall architectural appeal of the area and/or meets or exceeds the design objectives as described in the City's General Plan.

RENDERING



MATERIAL BOARD



COLOR ① CLASSIC CREAM
T/M - STO FINE SAND FINISH



COLOR ② BAMBOO T/M -
STO FINE SAND FINISH



COLOR ③ CUSTOM CASH T/M
- STO FINE SAND FINISH



COLOR ④ METAL PAINT - KYNAR
500 (O.E.) STEEL PAINT, COLOR
DARK BRONZE' - MATTE FINISH



COLOR ⑤ PAINT TO MATCH -
MUTUAL MATERIALS - BRICK -
'INCA-MISSION'



ALUMINUM STOREFRONT - DARK
BRONZE ANODIZED | GLAZING - 1"
CLEAR INSULATED IECC
COMPLIANT GLAZING

n.t.s.

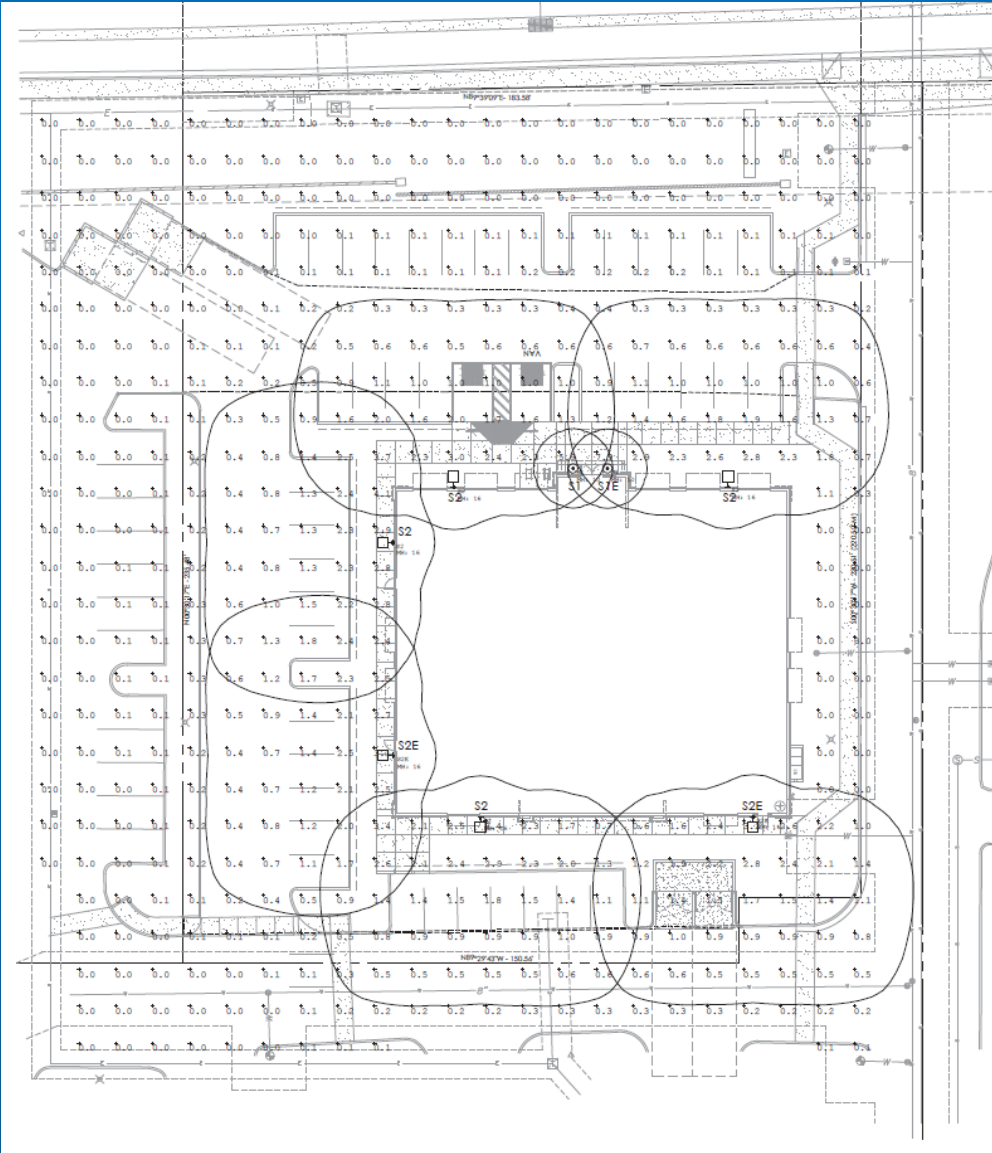
apple valley dental & braces

5215 east southern avenue,
mesa, arizona

CB-1.1

ADJACENT PROJECTS





DESCRIPTION

The Galleon™ Wall LED luminaire's appearance is complementary with the Galleon area and also luminaire bringing a modern architectural style to lighting applications. Flexible mounting options accommodate wall surfaces in both an upward and downward configuration. The Galleon family of LED products deliver exceptional performance with patented, high-efficiency AccuLED Optics™, providing uniform and energy conscious lighting for parking lots, building and security lighting applications.

SPECIFICATION FEATURES

Construction
Driver enclosure thermally isolated from optics for optimal thermal performance. Heavy wall aluminum housing die cast with integral external heat sink to provide superior structure rigidity and an IP66 rated housing. Overall construction passes ±1.5G vibration test to ensure mechanical integrity. UPLIGHT™: Specialty with the UPL option for internal mount upright housing with additional provisions to maintain IP rating.

Optics
Chose of lifetime patented, high-efficiency AccuLED Optics. The optics are precisely designed to shape the distribution maximizing efficiency and application spacing. AccuLED Optics creates lensed distributions with the capability to meet customer application requirements. Offered standard is 4800K (±7750 CCT and minimum 78 CRI). Optional 3000K, 5600K

and 8000K CCT. Greater than 90% lumen maintenance expected at 50,000 hours. Available in standard 1A drive current and optional 1200mA, 800mA, and 600mA drive currents.

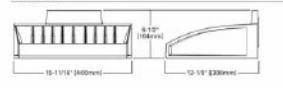
Electrical
LED drivers are mounted for ease of maintenance. 120-277V 50/60Hz 24V or 48V 50Hz operation. 800V is compatible for use with 480V Wye systems only. Drivers are provided standard with 0-10V dimming. An optional Eaton proprietary surge protection module is available and designed to withstand 15kV of transient surge. The Galleon Wall LED luminaire is suitable for operation in -40°C to 40°C ambient environments. For applications with ambient temperatures exceeding 40°C, specify the HA (High Ambient) option. Emergency gases option for -20°C ambient environments and occupancy sensor available.

Mounting
Gasketed and also paired right steel mounting attachment fits directly to 1" hole or wall with the Galleon slot "Wash-A-Lock" mechanism for quick installation. Secured with two passive corrosion resistant MacK bolts coated after head and screws which are concealed but accessible from location of fixture.

Finish
Housing finished in super durable FOC polyester powder coat paint. 2.5 mil nominal thickness for superior protection against fade and wear. Standard colors include black, bronze, gray, white, dark platinum and graphite metallic. RAL and system color matches available. Consult the McGraw-Edison Architecture Colors brochure for the complete selection.

Warranty
Five-year warranty.

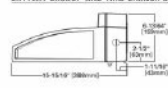
DIMENSIONS



HOLE/SLACK MOUNTING



BATTERY BACKUP AND TRIM-BRANCH BACK BOX



S2/S2E McGraw-Edison

Catalog #	Type
Project	lum
Comments	
Prepared by	



GWC GALLEON WALL
1.2 Light Square
Solid State LED
WALL MOUNT LUMINAIRE
WaveLinx



CERTIFICATION DATA
UL Listed
UL918 (UL918) Compliance
150-200
EMC/RFI/UL/Compliance/Qualifiers

ENERGY DATA
Efficacy: 43 lm/w
COP Power Factor: >0.97
24V/48V/80V/120V/277V/50/60Hz
80°C Max. Temperature
40°C Max. Temperature (98°C optional)

SHIPPING DATA
Approximate Net Weight: 27 lbs. (12.2 kg)



1766100100
July 23, 2014 4:00 PM

S1/S1E Halo Commercial

Catalog #	Type
Project	lum
Comments	
Prepared by	



HC Frame
HM6 LED Module
61 61PS Series Reflectors

0-inch Lens Downlight and Lens Wall Wash

1000/1500/2000/
3000/4000 Lumen



T24
Efficiency Standard
Minimum 24 lm/w
Minimum 90% Power Factor
Minimum 0.9 PF



17611031EN
June 23, 2014 3:54 PM

DESCRIPTION

Recessed 6-inch LED downlight provides narrow, medium or wide distribution patterns ideal for general area lighting. Lumen options range from 1000 to 4000 lumens in color temperatures of 2700K, 3000K, 3500K, and 5000K in 98 or 80 CRI. Luminaire is bright and can be installed in new construction or below the finished ceiling in remodeling applications. Intended for healthcare, hospitality, office spaces, and institutional applications.

SPECIFICATION FEATURES

Housing Frame
• Self-shielded galvanized steel slat frame with adjustable mounting brackets. 1/2" x 1/2" thick ceiling.
• May be installed in new construction; may be installed from below the finished (non-adjacent) ceiling in remodeling work (mounting base removed).
• Provided with (2) led work hood clips to secure the frame to ceiling.

Universal Mounting Bracket
• Mounting bracket adjusts 2" vertically from above the ceiling or from the aperture.
• Use with the recessed mounting base or with 1" EMT.
• Removable to facilitate installation from below the finished ceiling.

Mounting Bars
• Capable of supporting the Halo™ mounting base lock to tie grid with suspended ceiling.
• Corrosion-resistant aluminum.
• Copying mechanism allows for consistent spacing of fixtures.

LED Module
• Premium aluminum over chip on board LEDs provide a uniform beam with high efficiency and no hotspots.
• Available in 50 or 90 CRI minimum, accuracy within ±3 SDCA minimum color uniformity.
• 90 CRI option, 90-50 lumens to photometry (optional).
• Correlated color temperature options:
• 2700K
• 3000K
• 3500K
• 4000K
• Passive thermal management achieves L70 at 50,000 hours in IC and non-IC applications.
• Integral blue lens provides visual shielding.
• Integral connector allows quick connection to housing flex.

Reflector
• Self-shielded aluminum reflectors are available in narrow, medium or wide distribution patterns.
• Medium distribution polymer non-conductive trim reflectors may be used to meet local codes for direct contact applications.
• Wide angle spread lens for precise alignment of vertical illuminance.
• Reflector attached to LED module with (2) screws (4 screws for 61PS).
• Multiple reflectors at stated finishes are available.

Reflector / Module Rotation
• Reflector module assembly is securely retained in the housing with (2) tension springs.

Compliance

• UL Listed Classified, wet location (listed for covered ceilings).
• IP20 - Above finished ceiling.
• IP65 - Below finished ceiling.
• IEC Class II, 3000, 4000 lumen models. Installation must be kept 3" from top and sides.
• IEC rated 1000, 1500, 2000 lumen models, and suitable for direct contact to air permeable insulation (only beam insulation, consult WEMA LSC312013).
• AS/NZS per AS/NZS 6263-04.
• Suitable for use in clothes closets when installed in accordance with the NEC 410.16 spacing requirements.
• EMI/RFI emissions FCC Part 15 Class B at 100%
• Contains no mercury or lead and is RoHS compliant.
• Photometric testing in accordance with IES LM-79-09.
• Lumen maintenance projections in accordance with IES LM-80-08 and TM-21-11.
• 100, 1500 and 2000 lumen 3000K ICAT models may be used to comply with State of California Title 24 residential code, with ANSI A90.36 detector certification.
• May be used to comply with State of California Title 24 non-residential code, use a selectable LED luminaire ENERGY STAR® certified, reference certified light fixture database.

Emergency Option

• Provides 30 minutes of standby lighting meeting most life safety codes for egress lighting.
• Available with integral or remote charge indicator and test switch.

Connected Lighting

• HaloLinx™: the product's intelligent sensor enables control module, sensor and cable powering comprehensive lighting control.
• HaloLinx Pro (powered by EdgeWise) wireless the mount sensor and control kit.

System Options

• HaloLinx™: the product's intelligent sensor enables control module, sensor and cable powering comprehensive lighting control.
• HaloLinx Pro (powered by EdgeWise) wireless the mount sensor and control kit.

Junction Box

• Galvanized steel junction box.
• 20 in³ internal volume reducing voltage drop.
• 25 in³ internal total volume.
• Voltage divider for 0-10V dimming wires (occupies 15 in³ of internal space).
• Lenses for 80-912 AWG steel in four out 80°C conductors and feed thru ground wiring.
• (1) 1/2" and (2) 3/4" trade size push-wire terminals.
• (2) 1/8" and (2) 1/4" trade size push-wire terminals for remote voltage, with 1 point for future connection.



17611031EN
June 23, 2014 3:54 PM

- Staff has no major concerns
- The project meets the requirements of the MZO
- Staff welcomes any feedback on the proposed elevations

SUMMARY